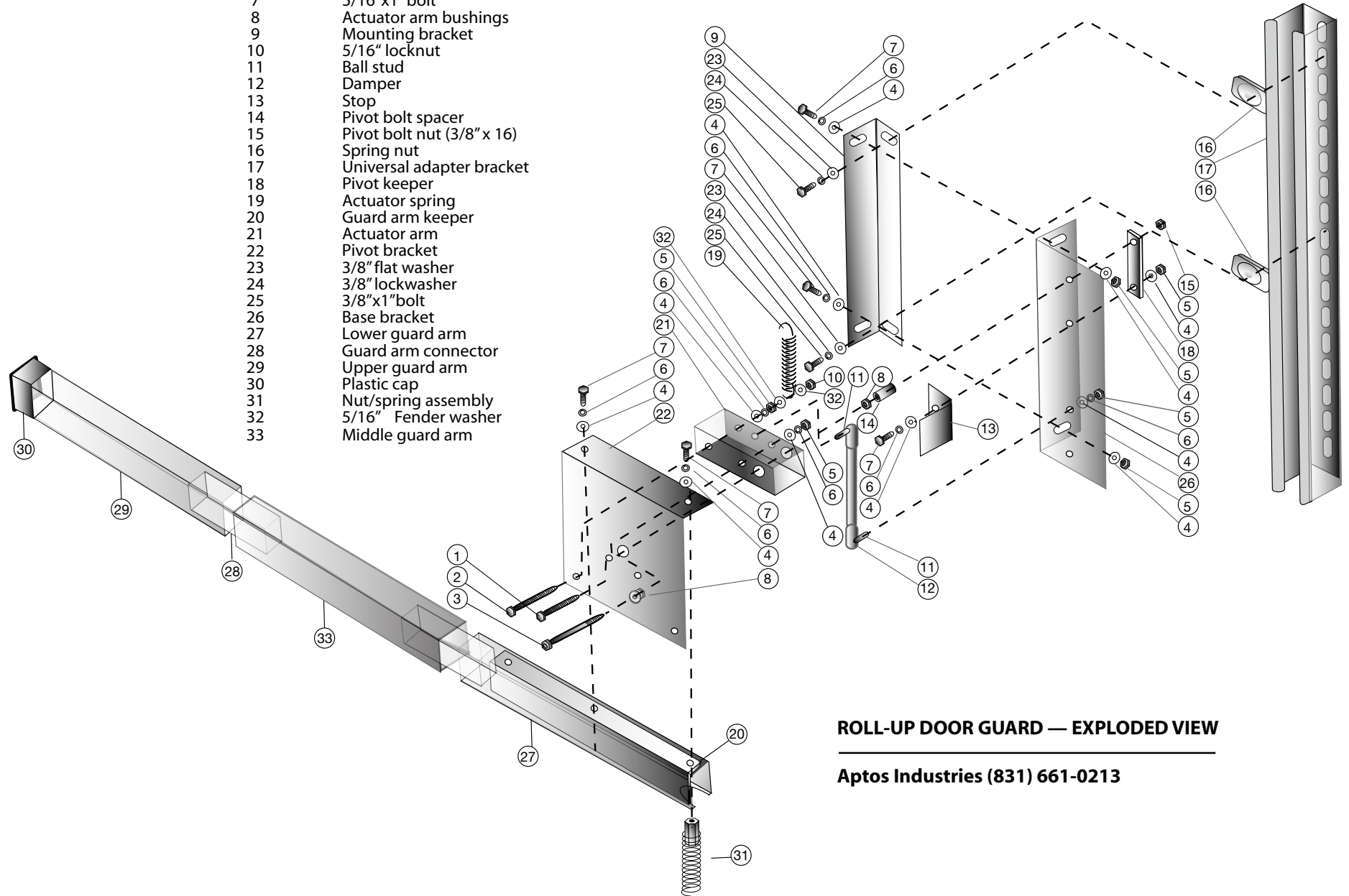


- | Exploded view # | Parts |
|-----------------|--|
| 1 | Actuator arm bolt (5/16"x3 1/2" carriage bolt) |
| 2 | Actuator arm bolt (5/16"x4 1/2" carriage bolt) |
| 3 | Pivot bolt (1/2"x4 1/2" axle bolt) |
| 4 | 5/16" flat washer |
| 5 | 5/16" nut |
| 6 | 5/16" lockwasher |
| 7 | 5/16"x1" bolt |
| 8 | Actuator arm bushings |
| 9 | Mounting bracket |
| 10 | 5/16" locknut |
| 11 | Ball stud |
| 12 | Damper |
| 13 | Stop |
| 14 | Pivot bolt spacer |
| 15 | Pivot bolt nut (3/8" x 16) |
| 16 | Spring nut |
| 17 | Universal adapter bracket |
| 18 | Pivot keeper |
| 19 | Actuator spring |
| 20 | Guard arm keeper |
| 21 | Actuator arm |
| 22 | Pivot bracket |
| 23 | 3/8" flat washer |
| 24 | 3/8" lockwasher |
| 25 | 3/8"x1" bolt |
| 26 | Base bracket |
| 27 | Lower guard arm |
| 28 | Guard arm connector |
| 29 | Upper guard arm |
| 30 | Plastic cap |
| 31 | Nut/spring assembly |
| 32 | 5/16" Fender washer |
| 33 | Middle guard arm |



ROLL-UP DOOR GUARD — EXPLODED VIEW

Aptos Industries (831) 661-0213